



**SD** One+



**24" 36"**

**COMPACT, FLEXIBLE,  
FULL COLOR,  
E/AO SCANNING**

**Cloud service**

Scan to your favourite cloud services.

**Full color**

SD One+ supports full color scanning.

**All popular file formats**

Supports all popular scan file formats  
– like PDF, TIFF and JPEG.

**Green**

EPA Energy Star® certified device.

**Need to move the scanner  
about?**

Don't worry, SD One+ is light enough  
for one person to carry.

## FULLY FEATURED, CONVENIENCE LARGE FORMAT SCANNER

**More than just great value**

SD One+ packs a huge amount of value into its lightweight 24" or 36" size. Easy to use, with fully featured software, plus a control panel directly on the scanner.

**Save time and money**

This is a must have office scanner at a very attractive price. Scan your oversized maps, engineering and construction drawings in-house with SD One+ to save space, time and money.

**Copy, share and collaborate**

With unmatched ease of use and the highest possible accuracy, you can trust SD One+ on even the most complex projects.

**Capture all your document types**

Scan and document all your architectural, engineering and construction plans in standard file formats directly into your project folders.



**RPG Digital Print Solutions**

(800) 521-6319

[www.rpg.com](http://www.rpg.com)

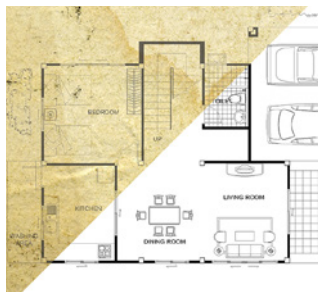
[info@rpg.com](mailto:info@rpg.com)

	SD ONE+ 24	SD ONE+ 36
Maximum scan width	24 inches (610 mm)	36 inches (914 mm)
Maximum media width	26.6 inches (676 mm)	38 inches (965 mm)
Weight	18.7 lbs. (8.5 kg)	24.9 lbs. (11.3 kg)
Dimensions	32.2x9.1x4.9 inches (818x231x124 mm)	45.6x9.1x4.9 inch (1158x231x124 mm)
SCAN SPEED (COLOR AND MONOCHROME) <sup>1</sup>		
150 dpi	3.8 inch per second	
300 dpi	1.9 inch per second	
600 dpi	1.0 inch per second	
OTHER SPECIFICATIONS		
Optical resolution	600 dpi	
Maximum resolution	9600 dpi <sup>2</sup>	
Total number of pixels	15552 pixels	
Context CFR <sup>3</sup>	Yes	
Maximum media thickness	0.03 inch/0.75 mm	
Accuracy	0.1% +/-1 pixel	
Data capture (color/mono)	48-bit	
Color space	sRGB (24 bit)/Grayscale (8 bit)/Monochrome (1 bit)	
Connectivity	USB with xDTR	
Network workflow	Pull/Push	
ENERGY STAR® certified	Yes	
File compatibility <sup>4</sup>	AutoCAD®, Microstation™, ArcGIS™ and all other CAD, GIS and other image editing/storage applications	
Operating system	Windows 10 and Windows 8.1, 32-bit and 64-bit	
Included scanning software	Nextimage FREE file scanning software included with the scanner. Easy creation of TIFF, JPG, PDF and PDF/A files	
Scanning software upgrade options	Nextimage Scan+Archive: Full featured scanning software incl. multipage (PDF, PDF/A and TIFF) and full image quality controls Nextimage Repro: Full featured scanning / copying software incl. built-in printer drivers and full color control	
Additional file formats <sup>5</sup>	PDF, PDF/A and TIFF Multipage, DWF, CALS, BMP, JPEG-2000(JP2), JPEG2000 Extended(JPX), TIFF-G3, others	
Nextimage TWAIN	64-bit TWAIN application driver included for use with EDM and other imaging software	
Power consumption (Ready/Power save/Scanning)	5.5/0.5/14 W, ENERGY STAR® Certified	
Power requirements	External power supply 100-240 VAC, 60/50 Hz, 16 W	
CERTIFICATION AND WARRANTY		
Safety	IEC 60950. Certificates: cUL (USA and Canada), CE (Europe), CCC (China), PSE (Japan), EAC (Russia, Kazakhstan, Belarus), KC (Korea), BSMI (Taiwan) and Ukr (Ukraine)	
Electro Magnetic Compatibility (EMC)	Compliant with Class A requirements, including FCC rules (USA), ICES (Canada), EMC Directive (EU), CCC (China), VCCI (Japan), EAC (Russia, Kazakhstan, Belarus), KC (Korea), BSMI (Taiwan), Ukr (Ukraine) and BIS (India)	
Environmental	ENERGY STAR® Certified, EuP (EU), WEEE (EU), RoHS (EU) and REACH (EU)	
Country of Origin	Designed and engineered in Denmark. Manufactured in China	
Warranty	2-year warranty and fast, easy parts replacement	
In the box	Scanner (24" or 36" model), 2 m USB cable, external power supply, basic scanning software (Nextimage FREE), installation software and user guides in PDF on USB flash drive, installation guide, calibration poster, calibration sheet and cleaning cloth	

- Scanning speeds based on 24" wide document. Context recommends Intel Core Duo, Core 2 Duo, or better processors, 2GB RAM, Hi-Speed USB2. Speed tests performed using Nextimage software, PC with Intel Core i5-2500 Quad processor, 8GB RAM, Hi-Speed USB2, 7200rpm HDD.
- Requires Nextimage FREE updated to Nextimage Scan+Archive or Nextimage Repro.
- Color Fringe Removal (CFR) is an advanced Context patented filtering technology designed to remove the fringes inherent in CIS strobing scanning devices.
- Context applications create industry standard raster file formats which can be used in any CAD or GIS application.
- Requires optional Nextimage Scan+Archive or Repro software

All trademarks remain the property of their respective holders, and are used only to directly describe the product being provided. Their use in no way indicates any relationship between Context and the trademarks holders.

## Scan, enhance, file and share with Context SD One+ large format scanner



**Improve your originals**  
SD One+ is a fully featured scanner with dedicated scanning software included.



**Flexible control panel**  
Scanner operation is easy with the intuitive SD One+ control panel.

Context solutions are compatible with all leading large-format printers. See the full list at [context.com/nextimage-supported-printers](http://context.com/nextimage-supported-printers)



[context.com/sd-one-plus](http://context.com/sd-one-plus)

**Context HQ & EMEA**  
Global Scanning Denmark A/S  
Copenhagen, Denmark  
Phone: +45 4814 1122  
info@context.com

**Context Americas**  
Global Scanning Americas (MD) Inc.  
Chantilly, VA. 20151, USA  
Phone: +1 (703) 964 9850  
salesamericas@context.com

**Context Japan & Asia**  
Global Scanning Japan A/S  
Yokohama, Japan  
Phone: +81 45 548 8547  
apac@context.com

 **context**  
WHEN IMAGING MATTERS